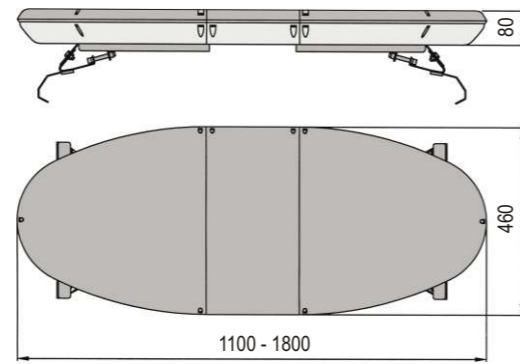


## Technical Specifications.

Operating voltage:	10-30V
Operating temperature:	-20 to +50° C
Current draw (average) per module in flash mode:	0,4A (12V) / 0,25A (24V)
Current draw (average) per module in cruise light mode:	0,05A (12V) / 0,03A (24V)
Current draw per module in steady burn:	0,4A (12V) / 0,25A (24V)
Colours of LEDs:	Amber, blue and red
Colours of lenses:	Base: Clear / Cover: Amber, blue and red
Dimensions:	1100 - 1800 x 460 x 80 mm
Weight:	According to model

## Arjent Solaris Series dimensions (mm).



# ARJENT



## Lightbar

### HOW TO ORDER

Select options from the list below:

#### Priority lights

Amber  Blue  Red

#### Secondary Options

- Extension for priority lights (R65)
- Alley light (AL)
- Take Down (TD)
- Stop light (LP)
- Front Flash (FF)
- Rear Flash (RF)
- Work lights (WL)
- Brake light (LF)
- Signalmaster (SM)
- Integrated Search light

#### Cruise Light

Yes  No

#### Mount accessories

- Wiring harness
- Roof Connector 23v
- Permanent mount
- Hook-on-mount

#### Siren Options

- AS320 DIG CAN BUS 12V
- AS320 DIG CAN BUS 24V
- Public Address kit

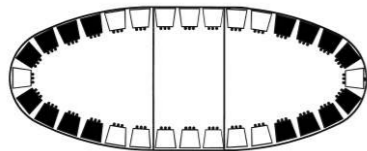
#### Inputs Box

- Converter CAN BUS- ANALOG

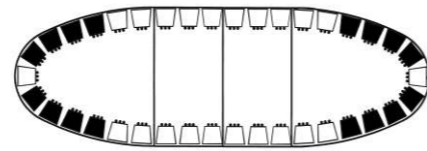
#### Control Head

- BCT2000
- BCT500 (PA included)

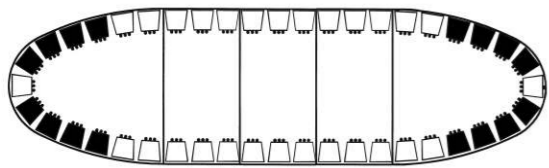
Length 1100 mm (44")  
Maximum 16 modules for secondary Options



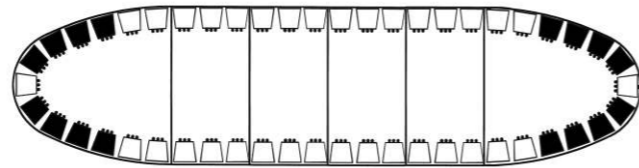
Length 1350 mm (53")  
Maximum 22 modules for secondary Options



Length 1600 mm (62")  
Maximum 28 modules for secondary Options



Length 1800 mm (71")  
Maximum 28 modules for secondary Options




# ARJENT





## CONFIGURABLE OPTIONS

Federal Signal Vama presents **ARJENT Solaris Series**, a low profile LED aerodynamic design lightbar, equipped with the most advanced LED technology, the Solaris technology, inspired by the sun's rays providing exceptional wide angle of coverage.

 **360° LIGHT BEAM DISTRIBUTION.** Its advanced optical design and the elliptical shape of Arjent provide 360° coverage and significantly greater off-axis warning than traditional linear lightbars eliminating dark spots.

 **SOLARIS.** Optical System with parabolic reflector composed by 3 Last generation LEDs.

 **ROC.** Lineal circuit board-to-board connection which reduce the number of electrical connections in a lightbar.

 **CANBUS.** Communication systems between lightbar, siren (AS-320) and the controller head (BCT500 or BCT2000). This system minimizes wiring installation and allows customizing the lightbar without removing it of the vehicle.

**Arjent Solaris** Series has a wide range of set-up options for priority and complementary emergency warning.

### Priority lights

Composed by two sets of eight modules of 3 LEDs Solaris latest-generation with advanced optical design, that provides exceptional emergency warning with excellent luminous coverage at intersections. Possibility of cruise light.

### Secondary options

All of them composed by 3 LEDs Solaris latest-generation with parabolic reflector.

### INTEGRATED SEARCH LIGHT

This new search light is completely built-in inside the lightbar, has got an exceptional light beam thanks to its latest generation LEDs and provides an extra emergency situation illumination when required.



### SIREN OPTIONS AS320DIG CAN BUS

- Horn connection
- Radio connection
- Remote microphone connection (optional)
- Auxiliary output lights (max. 10 A)
- Tachograph output (max. 1 A)



### CONTROL HEADS BCT2000 AND BCT500 CAN BUS

The BCT2000 and BCT500 stand out due to their compact and ergonomic design. Safe and easy to handle, they are fitted with a backlight keypad, in which active keys re brighter than the rest and emitting a "BEEP".

Different models availables (contact our Sales Department).



### INPUTS BOX CONVERTER CAN BUS - ANALOG

You can convert your CAN BUS lightbar in an analog system through the interface box (Part nº 2006036).

**Arjent Solaris** Series has two kinds of connections:

- **WIRING HARNESS** (standar)
- **ROOF CONNECTOR** 19 ways (optional)



Permanent or hook-on-mounting kit.



### Available colours

Smooth domes



Base

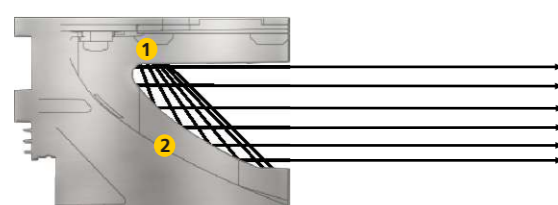


### Approvals

**Arjent Solaris** Series (priority lights in amber, blue or red) comply with R-65 european Regulation.

- **Blue:** Class 1 and Class 2.
- **Amber:** Class 1.
- **Red:** Class 1 and Class 2.

Arjent Solaris Series is according to R10 and with European directive 2009/19 on Electromagnetic Compatibility.



- 1 Last generation LED diodes.
- 2 Parabolic reflector maximizes LED light intensity.

Federal Signal Vama offers to his customers, the high performance and efficiency **Solaris** technology. Traditional light systems spread it in a random direction, LED **Solaris** Technology reflects a strong light beam where it is needed most, on a wide angle, avoiding dark spots.